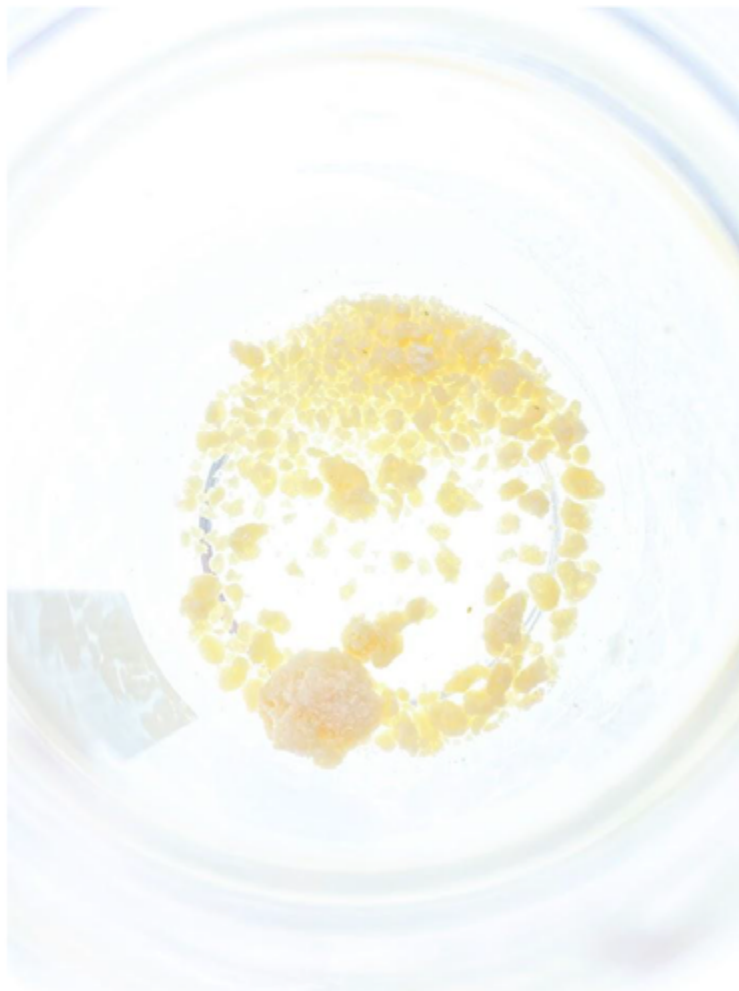


# Certificate of Analysis

For R&D Use Only - Not a California Compliance Certificate.

## Space Cake

Client: Spectrum Supply Co



**Total CBD** **1.06 %**

**Total THC** **79.93 %**

**Total Cannabinoids** **90.59 %**

**Sample Name:**

Space Cake

**Matrix:**

Concentrate

**Unit Mass:**

1 g per unit

**Sample ID:**

46540209-1

**Date Received:**

2/9/2024

*Marie*

Approved By:

Marie True, M.S.

Laboratory Manager

This certificate of analysis is responsible for the tested sample only and is for research and development (R&D) use only. This certificate of analysis shall not be reproduced, except in its entirety, without the written approval of FESA Labs. FESA Labs shall not be liable for any damage that may result from the data contained herein in any way. FESA Labs makes no claim to the efficacy, safety or other risks associated with any detected or non-detected amounts of any substances reported herein. If there are any questions with this report please email [info@fesalabs.com](mailto:info@fesalabs.com). This certificate of analysis is intended only for the use of the party to whom it is addressed and may contain information that is confidential or protected from disclosure under applicable law. If you have received this document in error, please immediately contact us.

**References:** limit of detection (LOD), limit of quantitation (LOQ), not detected (ND), not tested (NT)

# Certificate of Analysis

For R&D Use Only - Not a California Compliance Certificate.

## Cannabinoid Analysis

Complete

Analyte	LOD (%)	LOQ (%)	Mass (%)	Mass (mg/g)
CBDV	0.0035	0.011	ND	ND
<b>CBD</b>	<b>0.0030</b>	<b>0.0090</b>	<b>1.063</b>	<b>10.63</b>
CBG	0.0038	0.011	ND	ND
CBDA	0.0017	0.0052	ND	ND
CBN	0.00080	0.0024	ND	ND
<b>Delta 9-THC</b>	<b>0.0022</b>	<b>0.0067</b>	<b>0.251</b>	<b>2.51</b>
Delta 8-THC	0.0020	0.0059	ND	ND
CBC	0.00070	0.0021	ND	ND
<b>THCA</b>	<b>0.0024</b>	<b>0.0073</b>	<b>88.004</b>	<b>880.04</b>
<b>Total CBD</b>			<b>1.06</b>	<b>10.63</b>
<b>Total THC</b>			<b>79.93</b>	<b>799.30</b>
<b>Total Cannabinoids</b>			<b>90.59</b>	<b>905.87</b>

Date Tested: 2/12/2024

Total THC = THCa \* 0.877 + d9-THC + d8-THC

Total CBD = CBDa \* 0.877 + CBD

### Method References:

### Testing Location

Cannabinoid Profile (UNODC)

FESA Labs - Santa Ana, CA

Official Methods of Analysis, Method 2018.11.AOAC INTERNATIONAL (modified), Lukas Vaclavik, Frantisek Benes, Alex Krmela, Veronika Svobodova, Jana Hajsolva, and Katerina Mastovska, "Quantification of Cannabinoids in Cannabis Dried Plant Materials, Concentrates, and Oils Liquid Chromatography-Diode Array Detection Technique with Optional Mass Spectrometric Detection," First Action Method, Journal of AOAC International, Future Issue

United Nations Office on Drugs and Crime - Recommended methods for identification and analysis of cannabis and cannabis products

### Testing Location:

**FESA Labs**  
2002 S. Grand Ave., Suite A  
Santa Ana, CA 92705  
(714) 540-0172  
[www.fesalabs.com](http://www.fesalabs.com)